

—
Fit faster with INSIGHT®

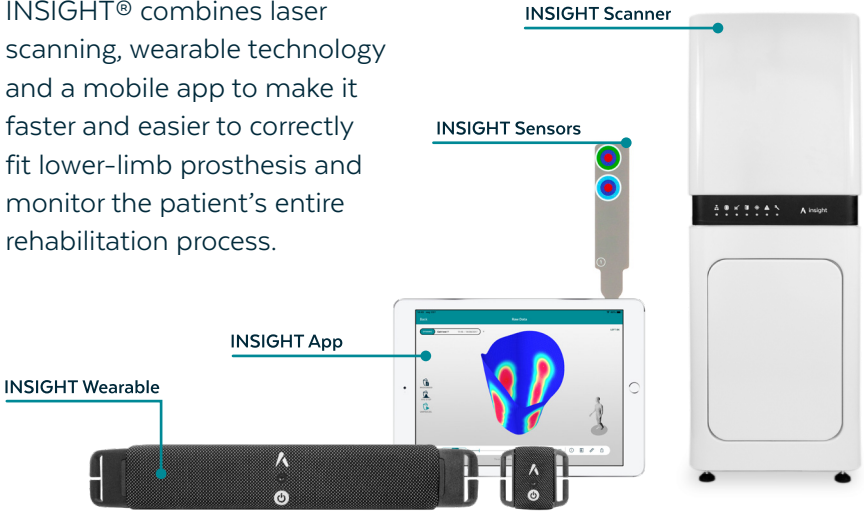
www.adapttech.eu



About INSIGHT®

INSIGHT® is a new system designed to improve the efficiency of the fitting process to rapidly deliver an ultra-comfortable, uniquely-fitted lower-limb prosthesis for the patient.

INSIGHT® combines laser scanning, wearable technology and a mobile app to make it faster and easier to correctly fit lower-limb prosthesis and monitor the patient's entire rehabilitation process.



INSIGHT® Scanner

A laser scanning system that creates a precise 3D model of the inner surface of a prosthetic socket in under 90 seconds. By scanning the socket with the sensors in place, a 3D map of the sensor locations is created.

INSIGHT® Wearable

Worn by the patient and attached to the sensors placed around the socket to gather and transmit biodata throughout static and mobile tests. Delivers complete real-time gait analysis with a detailed pressure distribution map.

INSIGHT® App

User-friendly software that identifies pressure points and potential problem areas by receiving data from the sensors and wearable. Also tracks patient history, keeping digital records of all appointments for every patient.

INSIGHT® Sensors

Low-profile, biocompatible sensorized strips, which are applied to the socket and gather biodata when it is worn by the patient. The more sensors used, the more accurate will the pressure map will be.

The benefit of INSIGHT®



Prosthetists

- Access to precise, quantitative data
- Pinpoint problems faster
- No need to rely on inaccurate patient feedback
- Access to patient history
- Access to pressure data contextualized by gait analysis



Prosthetic Centers

- Each patient requires less time from the prosthetists
- Time and resources to treat more patients
- Access to quantitative data for insurance purposes
- Easier to train younger prosthetists, since they can now see the experience of their mentors translated into objective data and concepts
- Access to medical history
- Patient sockets can be stored digitally



Patients

- A more accurate fitting process means less pain
- Less time to get the socket adjusted
- Quicker response from the healthcare providers
- More transparent and engaging process
- Better understanding of clinical decisions

Healthcare Providers

- Ability to monitor patients more closely
- A more efficient and cost-effective workflow



Breaking the “trial and error” cycle

Socket-fitting is vital to the proper fit and function of all lower-limb prostheses. But the traditional fitting process uses a time-consuming trial-and-error methodology, with patients expected to give feedback on the socket's fitting through static and dynamic tests.

This patient feedback can be insufficient or misleading, and the trial-and-error cycle can take up many hours of clinical time, and multiple visits for the patient to achieve a proper fit.

This can cause significant discomfort, a loss of mobility, inconvenience, and a number of other physical and psychological effects.

INSIGHT® WORKFLOW

Using INSIGHT®, prosthetists are presented with high quality biodata gathered by the sensors to complement the patient's feedback and clearly understand what's happening inside the socket. This can help detect problematic areas with fit even before a patient notices the issue, which can sometimes take days of wear.

With INSIGHT®, prosthetists can anticipate issues and finalise changes to the socket from the very first visit.



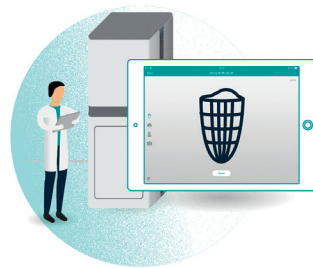
Place INSIGHT® Sensors inside the socket.



Place the socket with the Sensors inside the INSIGHT® Scanner.



On the INSIGHT® App, select the Scanner and start scanning.



While the Scanner is working, add patient information.



Test the socket on the patient and analyze the pressure map.



After the necessary adjustments, the patient will have a perfectly fitting socket

Clinical studies

We believe that our technology improves lives: creating a faster and smoother fitting experience – and giving patients a prosthetic that fits them better. But we want to prove it, so we run clinical studies around the world to ensure that our technology is providing the best experience possible.

PORTUGAL: Centro de Medicina de Reabilitação de Alcoitão

The main purpose of this study was to evaluate the INSIGHT® system and its performance on residual limb-socket fittings – in particular to test how the efficiency of the fitting process could be improved, and how comfortable and usable the final prosthesis was for the patient.

The majority of patients achieved a satisfactory socket in just one visit. The technician's evaluation time using INSIGHT® was, on average, half that when using traditional evaluation methods. The utility and acceptability of the INSIGHT® System was positively evaluated by both patients and technicians.

USA: De La Torre O&P, Pittsburgh, PA, & Prosthetics & Orthotic Associates, Middletown, NY

This study is currently running at De La Torre O&P, Pittsburgh, PA, and Prosthetics & Orthotic Associates, Middletown, NY. It will expand on the previous study's objectives: testing the efficiency of the fitting process; how comfortable and usable the final prosthesis; and financial analysis into the commercial benefit of the INSIGHT® system for OAP clinics. The study will use clinically recognised benchmark tests to gather quantitative feedback from the clinicians, technicians and patients.



What the O&P community is saying about INSIGHT®



“We’re excited to be one of the first clinics in the United States to access this technology. By using INSIGHT® in our fitting and evaluation process, we expect to see improved patient health, reduced pain levels, and increased patient activity by greatly improving the initial patient/prosthetist experience. INSIGHT® allows our prosthetists to more accurately fit the socket to the patient sooner, and who doesn’t appreciate that?”

Edward de La Torre, President, De La Torre O&P



“By integrating INSIGHT® into our patient management system, we aim to reduce the amount of time prosthesis fitting and evaluation takes for the benefit of both our patients and medical operators. We hope that INSIGHT® will help us improve patients’ AMPPRO K-level scores, opening up a new world of opportunity for access to more advanced prostheses.”

Thomas Passero, CP and Founder, Prosthetic & Orthotic Associates



Adapttech is a biomedical company focused on developing technologies that empower healthcare providers to help people with physical limitations to improve their quality of life.

www.adapttech.eu

info@adapttech.eu

+44 121 371 8196

HQ

Institute of Translational Medicine

Heritage Building

Mindelsohn Way

Birmingham

B15 2TH

United Kingdom

R&D

Rua Oliveira Monteiro 649

4050-445, Porto

Portugal

US OFFICE

1800 N Greene St, Ste E

Greenville, NC 27834

United States

